

# Paint with shell

## Party Information Pack



BOOK ONLINE  
[www.paintwithshell.com.au](http://www.paintwithshell.com.au)

REVISED AUGUST 2023



Private Events & Pop Ups .....3

Get creative with Shell .....4

About Shell .....4

What types of parties are there? .....5

- In person parties
- Virtual paint parties

In person paint parties .....6

- How much does it cost?
- How many people are required?
- What is included in the cost?
- How long does the party go for?
- Are there any optional add ons or extra costs?

  - Artwork outline
  - Custom artwork fee
  - Venue hire
  - Overtime fee
  - Travel fee
  - Event photography
  - Catering
  - Property damage

Team Building: Bonding & building relationships ..... 10

- Team mural
- Mystery artworks
- Musical Easels

What artworks can I choose from for my party? ..... 11

Paint your own clutch bag ..... 12

Party hours ..... 13

Cancellation Policy..... 13

Insurance ..... 13

Ready to book? ..... 13

FAQ - Frequently asked questions ..... 14





## Private Events & Pop Ups

BIRTHDAY PARTIES  
HENS PARTIES  
GIRLS WEEKENDS  
TEAM BUILDING  
FUNDRAISERS  
PROMOTIONAL EVENTS  
CHRISTMAS PARTIES  
ONLINE CLASSES  
VIRTUAL PAINT PARTIES

*Planning your next personal  
or corporate event?*

Paint with Shell is a fun & memorable experience, offering a playful approach to creating your very own masterpiece.





## Get creative with Shell

Paint with Shell is a mobile art studio offering group paint classes and paint parties - a perfect, fun & memorable experience.

Whether you host it at your home, workplace, holiday rental or another venue of your choice... I come to you and everything you need is supplied - a canvas, paint, brushes, easel and an apron, you just need to bring your imagination & your friends.

I will guide you through step by step on how to complete an artwork, how to mix colours and how to use different brush stroke techniques - my classes are designed for beginners - so no experience is required!

## About Shell

I am the graphic designer, photographer and artist behind creative shell. I have a degree in Visual Communication Design and am very passionate about teaching people my love of art.

I grew up in Sydney and moved to the Mid Coast in my early 20's where I now teach most of my classes.



MidCoast  
BUSINESS AWARDS  
2021 Winner



# What types of parties are there?

I offer two types of parties - in person & online.

## In person parties

I supply everything with my mobile paint studio. I come to you, set up the class, teach the class, pack up & clean up.

Minimum artists required: 6

Maximum artists: 20



## Virtual paint parties

These are done via Zoom or Facebook live. I walk you through step by step on how to paint an artwork, the only differences are everyone is painting from their own homes and you will need to source your own art supplies (the price of your ticket is for my guidance only).





# In person paint parties

## How much does it cost?

If you host a party at your house, the cost is \$55 per person. If you need to hold the party at a venue, the cost of the venue hire needs to be organised and covered by the host or participants.

## How many people are required?

I require a minimum of 6 people to go ahead with a class and can teach a maximum of 20 people per sitting.

I can accommodate classes with less than 6 people - however the minimum charge is \$330, which means the cost per person increases.

5 people - \$66 pp	4 people - \$82.50 pp
3 people - \$110 pp	2 people - \$165 pp

## What is included in the cost?

The price per seat includes everything you'll need to create your masterpiece.

You'll have all the necessary equipment provided, including:

- 40 x 50cm blank canvas
- Acrylic paints
- Paint palette
- Brushes
- Table easel
- Water glass
- Pencil
- Apron
- Table cloths
- Printed artwork for reference
- A pre-drawn outline

All in-person paint parties include step by step guidance to assist you in releasing your inner Picasso and the necessary time to set up the party beforehand and pack up afterwards, ensuring your location is as clean as we found it.

The only things you'll need to bring are your drinks, some nibbles and your imagination. You and your guests get to





choose beforehand what painting you'd like to recreate from a library of sample paintings, see page 11.

Please note: the price is for the canvas and for my guidance only, the other equipment provided is for use during the session. Pricing does not include the cost of venue hire if required.

**IMPORTANT:** I do not supply tables and chairs - if you are hosting a party at home, please make sure you have enough space to accommodate your guests.

## How long does the party go for?

I will arrive at least 1 - 1.5 hours beforehand to setup everyone's painting stations and get the area ready for a paint party. The larger the group, the longer it may take to setup. The instruction will last 2 - 3 hours long. I will require at least an hour or so to pack up and clean up the party. I use plastic table cloths to protect your tables from paint. The paints we use are acrylic water based paints so the paint is non-toxic and cleans off hard surfaces easily with soap and water. (Carpet and clothing... not so easy.)

When booking a party under 10 people - please allow 1 hour for set up.

When booking a party over 10 people - please allow 1.5 hours for set up.

Please note, if the party exceeds 3.5hrs there is an overtime fee of \$80 per hour. The time I allow to complete the class is for teaching ONLY - If you want to eat, cut a cake, open presents, socialise or play any games, this should all be done before or after the painting party to avoid extra costs.

## Are there any optional add ons or extra costs?

### Artwork outline - Included in price

I pre-draw the outline of the subject for you in lead pencil so you don't have to stress about getting the correct proportions. I use a projector to project my artwork onto the canvas - that way it will be exactly the same as the original.

This is automatically included, if you DO NOT want your outlines drawn please mention this when booking.







## Custom artwork fee - \$55.00\*

Don't like any of the available artworks or have something specific you'd like to paint?

I can create a custom artwork specifically for your event!

*\*Please note that this cost is non-refundable should you need to cancel.*



## Venue hire

If you wish to host your paint party at a venue other than your home, YOU are responsible for booking the venue and any other costs associated with booking the venue. YOU also need to make sure the venue allows paint parties as not all venues do. When booking, remember to allow 2 hours extra for set up and pack up time. My classes are designed to be completed in under 3 hours, so if we go overtime - it is YOUR responsibility to cover any extra costs associated with the venue.

## Overtime fee - \$85.00 p.h.

My classes are designed to be completed within 3 hours. If the party exceeds 3.5hrs an additional hourly rate of \$85 per hour is charged. The time I allow to complete the class is for teaching ONLY - If you want to eat, cut a cake, open presents, socialise or play any games... this should all be done before or after the painting party to avoid extra costs.



## Travel fee - starts at \$33.00

There is a travel cost for areas 30km away from my region. Price ranges from \$33 - \$88.

I am based in Hallidays Point, however I do travel anywhere between Sydney & Port Macquarie.

Mid Coast +30km	- \$33.00
Newcastle	- \$55.00
Port Macquarie	- \$55.00
Sydney	- \$88.00



For Sydney classes you will need a minimum of 10 people, or a \$550 minimum class charge if you have less than 10 people.

## Professional event photography - \$55.00

As I am also a photographer, I can photograph your event for an additional \$55.00 and supply all the photos on a USB for you on the same day.



## Catering - \$15.00pp

For an additional \$15.00 per person I can bring a palette of nibbles for each person (see below). This option is only available for locations that do not sell food & drink e.g. your home, workplace or a hall.

This will include: Cheese, crackers, dip, grapes or strawberries (if in season), carrots and something sweet. Please advise of any dietary requirements when booking.



## Property damage - \$3.00 - \$20.00 per item

All breakages and damage to property must be paid for. Individual items range in price from \$3.00 - \$20.00.

Please note that getting paint on the items in your painting kit is not classed as damage.

Drunk & disorderly behaviour will not be tolerated.





# Team Building: Bonding & Building Relationships

Bring your team together with a paint party - try something new and make some great memories. If you're looking for something a bit different to my usual class style - I offer a range of team building options:

## Team mural

An ideal team building experience, everyone in the group paints one section of an artwork on their own canvas (see right). At the end of the class all of the individual canvases get put together to create one large mural that can be hung in the workplace. It requires participants to negotiate colour, design elements, and transitioning between individual canvases to create a cohesive product. As in the workplace, co-workers must consider the opinions and views of others to produce a finished work.

## Mystery artworks

I take the group through step by step on how to paint an artwork as per usual - the only difference is no one knows what we are painting except for me.

## Musical Easels

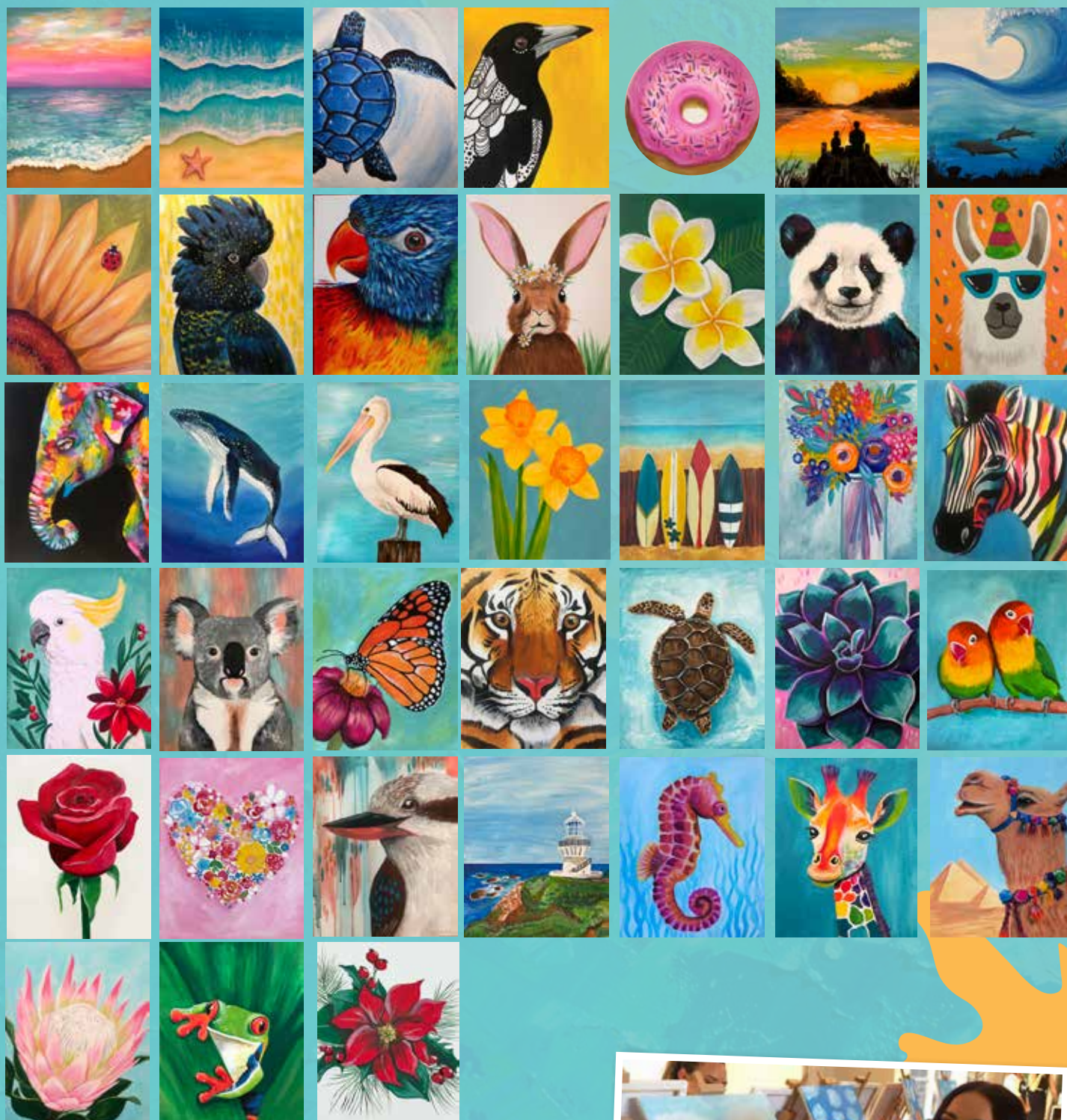
Another twist on collaborative painting, participants start with the same pre-drawn canvas, rotating to another canvas every 15 minutes. Just as work projects require us to consider co-workers' input, this activity focuses more on the creative process rather than the final product. This is a terrific activity for even the most reluctant of painters because each painting is the product of many.





# What artworks can I choose from?

All of these artworks are designed for complete beginners, however some are easier than others. The top two rows are the easier options if you're feeling worried at all.



## Don't like any of the artworks?

For an additional \$55 I can paint a custom artwork for your group of your choosing. Just send me a photo of what you have in mind. This lovely hen on the right had a custom portrait done of her and her fiancé.





# Paint your own clutch bag - \$65pp



This painting workshop is great for those who would like to paint something functional! Stand out from the crowd with your very own one of a kind clutch bag. Each kit includes a pre-made PVC bag and a pre-cut canvas insert.

No sewing is required - simply paint & insert.

This is NOT a step-by-step guided class, you paint whatever YOU like - the possibilities are endless.







## Party hours

My current availabilities are:

Monday - Friday 5:30pm - 10:00pm

Saturday & Sunday 8:00am - 10:00pm

## Cancellation Policy

I understand unexpected things pop up and things happen beyond our control. If you just need to reschedule that is fine. Just let me know as soon as possible as other parties may have wanted your date. If you cancel giving me more than 14 days notice you can request a full refund. If you cancel giving me less than a 14 day window then I will give you credit towards a future paint party. There are no refunds for "no shows" on the day of the event.

## Insurance

I have public liability insurance, your safety is my #1 priority...along with having a good time of course!

## Ready to book?

Please read this information pack before booking.

When you're ready to book please visit:

[www.paintwithshell.com.au](http://www.paintwithshell.com.au) and fill out my booking form.

I will get in touch with you to confirm if your date is available. If you're not sure on how many people are attending or where you would like the party to take place - please email me as soon as possible so I can lock in your date [shelley@creativeshell.com.au](mailto:shelley@creativeshell.com.au) That way your date is confirmed and you can fill out my booking form when you sort the other details out.

A \$10 per person deposit is required to lock in your date and secure your booking, with full payment due 14 days before the event.





# Frequently asked questions

## What if I don't know how to paint?

These classes are for you! My paintings are designed for complete beginners, I walk you through step by step on how to create your very own masterpiece. Any skill level is welcome! This is not a class - it's a party and I am a tutor that gives you the freedom to be creative. You don't have to listen to everything I have to say, art is therapy and this should be your chance to de-stress, unwind, and let your imagination run wild!

To give you a little head start on your painting, I pre-draw the outline for you so you don't have to stress about getting the correct proportions. I use a projector to project my artwork onto the canvas - that way it will be exactly the same as the original. This comes at no additional cost to you.

## Are children allowed to take part in the workshops / do you do childrens parties?

Yes... children are allowed to take part in adults workshops. At this stage I do NOT offer childrens parties, I do not have the relevant insurances to cover teaching children & childrens parties.

## Can we bring our own nibblies and food?

Of course, provided that the location we are painting at does not sell food & drink!

I strongly encourage everyone to have a little food while they paint to keep those creative juices flowing!

If you don't want the hassle of bringing your food - let me bring some nibbles (cheese, crackers, dip, carrots & something sweet) for an additional \$15 per person.

## Can we bring our own alcohol?

Some premises do not allow alcohol.... but if the premises does then YES you can! If you wish to bring alcohol, please let me know and I can confirm if it is allowed. Please remember to bring your own glass too!







## What if I don't finish?

My workshop paintings are designed to be completed within 2-3 hours. If you don't manage to finish in time, no need to stress - I can give you some paint to take home so you can finish it off.

## What kind of paint do you use?

We use non-toxic, water based acrylic paint.

## What should I wear?

Although I provide all of your party guests with aprons, it is recommended that you wear clothing that you don't mind getting paint on. The paints we will be using are acrylics which are water based non-toxic paints. Acrylics do make for an easy clean up on hands and skin, but clothing is a bit more difficult and can stain.



## Are your paint parties COVID safe?

Creative Shell is a registered COVID-Safe business. If you are feeling unwell, please do not attend.. Hand sanitiser will be available.



## Can you set up at a public venue?

Restaurants / pubs / clubs / bars / cafes

Yes! But YOU will need to get approval from the venue prior to booking. Not all venues are happy about hosting paint parties as there is a potential for costly mess!

Parks

Unfortunately to use council property, I require a permit which I do not have.

## Do you provide tables and chairs?

Unfortunately, I do NOT provide tables and chairs. If you are hosting at home, please ensure you have enough tables and chairs to accommodate your guests.





# Paint<sup>with shell</sup> BOOK NOW!

Visit

[www.paintwithshell.com.au](http://www.paintwithshell.com.au)  
and fill out my booking form.

**Shelley May**

[shelley@creativeshell.com.au](mailto:shelley@creativeshell.com.au)

[www.paintwithshell.com.au](http://www.paintwithshell.com.au)



MidCoast  
BUSINESS AWARDS  
2021 Winner



paintwithshell



paint.with.shell